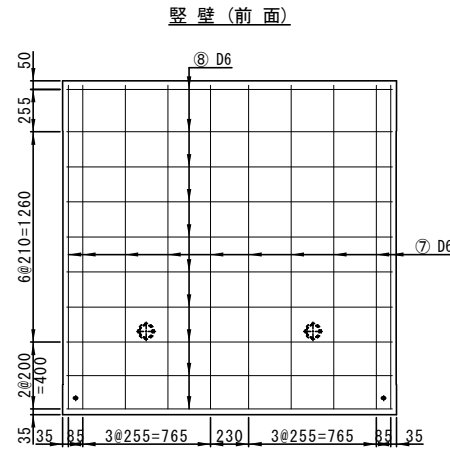
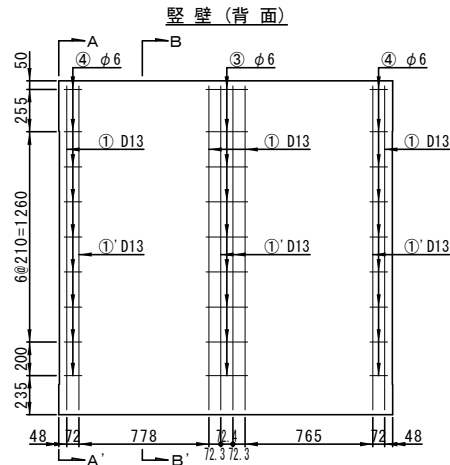
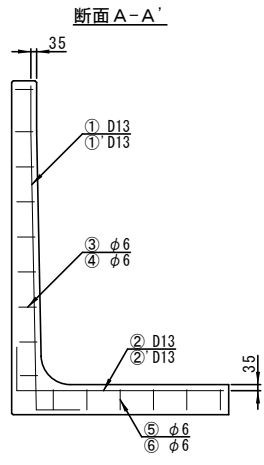


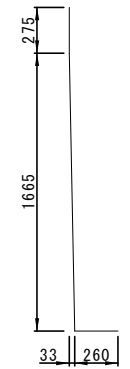
# ロードウォール H=2000 配筋図

配筋						
記号	径 (mm)	長さ (mm)	本数 (本)	質量 (kg)	形状	材質
①	D13	2200	4	8.76	┌	SD295
①'	D13	2140	4	4.80	└	//
②	D13	1500	4	5.97	┌	//
②'	D13	1440	4	3.23	└	//
③	φ6	540	9	1.08	□	SWM-B
④	φ6	395	18	1.58	□	//
⑤	φ6	570	6	0.760	□	//
⑥	φ6	425	12	1.14	□	//
⑦	D6	3180	10	7.92	┌	SD295
⑧	D6	1950	16	7.77	└	//
TOTAL				43.0	kg	

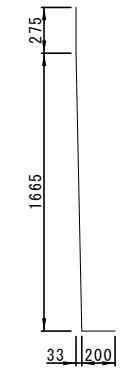


鉄筋加工図

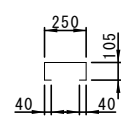
① D13-2200



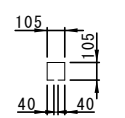
①' D13-2140



③ φ6-540

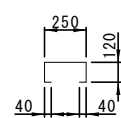


④ φ6-395

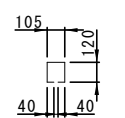


※40mmは最低寸法

⑤ φ6-570

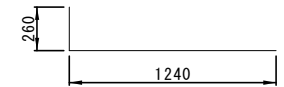


⑥ φ6-425

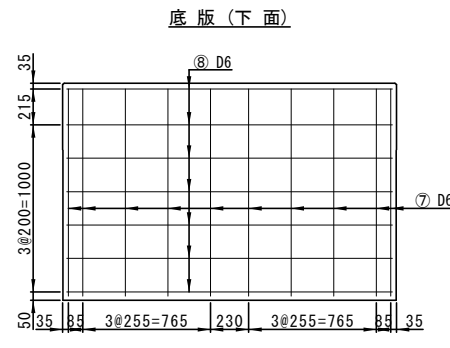
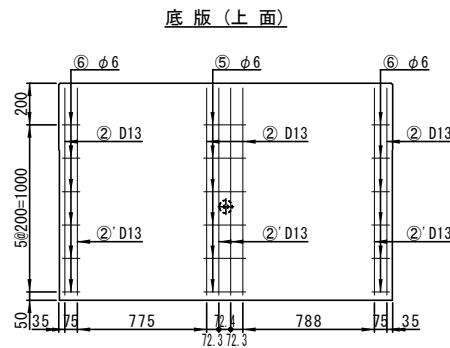
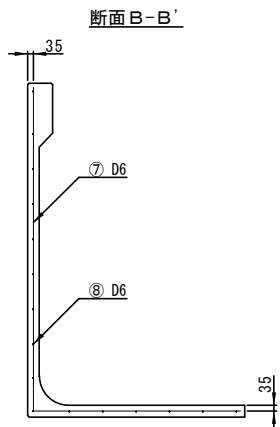
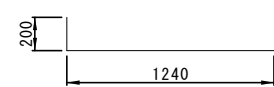


※40mmは最低寸法

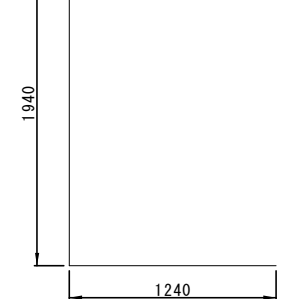
② D13-1500



②' D13-1440



⑦ D6-3180



⑧ D6-1950

